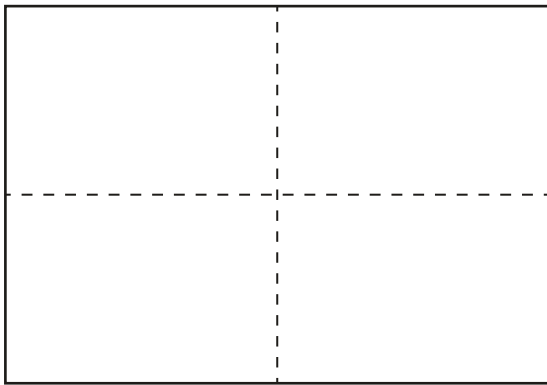
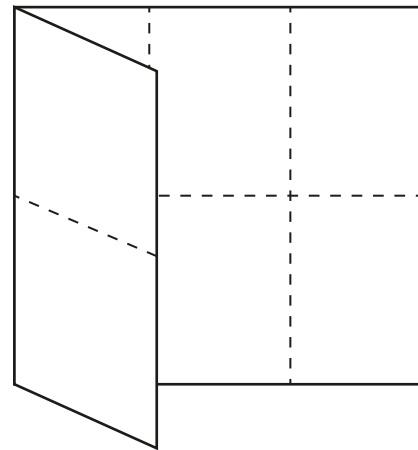


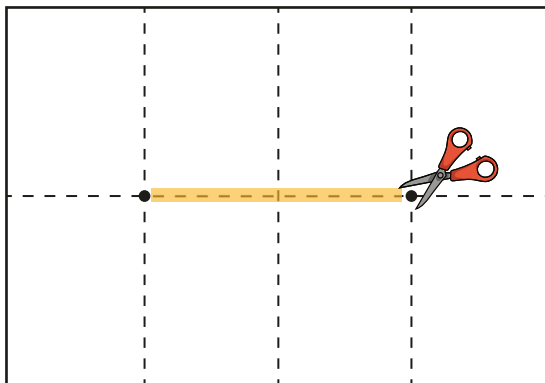
My Bristol Glossary - How to fold your booklet



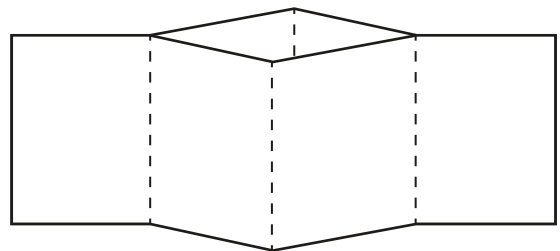
Fold your sheet in half both ways. There are lines on the booklet to help guide you.



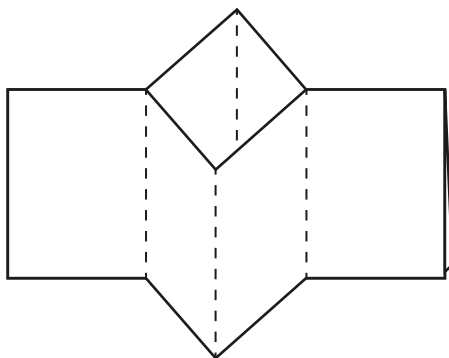
Lay your paper flat again and fold both of the short edges into the centre.



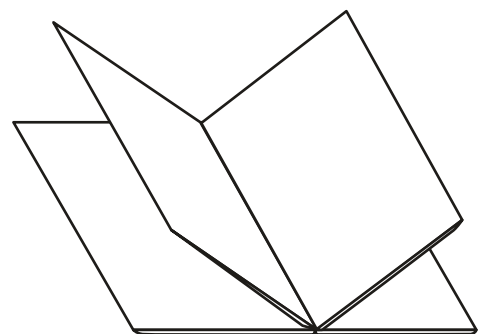
Using scissors, carefully cut along the centre fold.



Fold the paper in half long ways, then pull the cut open.



Push the sides together, closing the gap you have cut.



Fold the pages round so the cover is at the front. If you want your book to be extra strong, glue the insides of the pages so it holds its shape.



Transatlantic Slave Trade
The trade in enslaved people who were transported from Africa to the Americas.

Stokeleigh Camp
An Iron Age fort near Bristol. The difference between high and low tide.

tidal range

William Jessop
The engineer who designed the Floating Harbour in Bristol.

River Avon
The river at the heart of Bristol that has been adapted as the city seal has grown.

seal

SS Great Britain
A famous steamship built in Bristol.

St Augustine's Reach
A channel that was created between the River Frome and the River Avon.

Atlantic Ocean

The ocean that gave Bristol access to trade routes around the world.

Bristol Bridge

A bridge that was rebuilt by the Normans in stone and opened up Bristol to trade.

Bristol Castle

A Norman castle that stood in the centre of Bristol.

Bristol Channel

The estuary that takes the River Severn and the River Avon into the Atlantic Ocean.

John Cabot
A famous Italian explorer who was based in Bristol.

lock

A basin in a dock that is controlled using gates at either end.

low tide

When the tide is at its lowest level.

maritime

Relating to the sea.

medieval

A period of time also known as the Middle Ages.

Brycgstow

An early name for Bristol.

dam

A barrier used to hold back water.

dock

An enclosed area of water used for loading, unloading and repairing ships.

dredger

A boat used for removing material such as silt from water.

Floating Harbour

A harbour in Bristol that was created to allow ships to stay afloat regardless of the tide.

Great Western Dockyard
The place where SS Great Britain was built.

harbour

A place where ships may be moored.

high tide

When the tide is at its highest level.

Isambard Kingdom Brunel

An engineer responsible for designing many important things such as the Clifton Suspension Bridge and the SS Great Britain.

My
Bristol
Glossary



Teacher's Pet



Historic England



Local History

Historic England and Teacher's Pet have come together to bring you a collection of free resources that you can use in your local history teaching.



Historic England



Teacher's Pet

Who are Teacher's Pet?

Teacher's Pet have been providing downloadable and playable educational content to early years and primary school teachers for over 14 years. We cover all areas of the curriculum and use a team of in-house teachers and designers to create engaging and memorable concepts, that the children will love.

Why local history?

At [Teacher's Pet](#) we want to empower primary school teachers by giving them the tools they need to deliver inspiring and thoughtful lessons about the local area and its history. We believe local history teaching has such an important part to play in a child's wellbeing – helping to give children a sense of pride in where they live.

Our Local History project is designed to provide teachers across the UK with everything they need to successfully carry out a full scheme of teaching about their local area, through key enquiry questions and source led activities.

Working with [Historic England](#) gives us access to archived maps and photos for resources and information from knowledgeable local historians, as well helping us to provide the content to you free of charge.

For more information about our Local History project or to find out more about Teacher's Pet Classroom Resources, please visit our website.